

## DOWNLOADING CHEMDRAW

1. Go to <https://connect.revitysignals.com/sitesubscription/Gallery.aspx>
2. In the search box under “ChemDraw Subscription Gallery”, search for “The University of Texas at San Antonio”:

### ChemDraw Subscription Gallery

Your organization (Academic or Commercial) may have a ChemDraw Subscription License, enabling you to have access to the latest version of the market-leading chemical drawing software. Please use the filters below to verify if you are eligible to access and download your copy of ChemDraw. If you cannot find your organization on this page and would like to obtain ChemDraw Subscription License, please get in touch with us by clicking [here](#).

The latest version of ChemDraw is available via the Download Center, which requires the user to register before downloading.


Please use the [Quick Start Guide](#) to learn how to quickly register and activate your copy of ChemDraw.

Revvity Signals Cloud Applications ChemOffice+, Signals Notebook Individual Edition have reached End of Life. [Click here](#) for details

The University of Texas Health Science Center at San Antonio

The University of Texas San Antonio

3. Click “Register” on the next page:



The Office of Information Technology

## The University of Texas San Antonio

San Antonio, USA

Register to download the latest version of ChemDraw

Register

4. Enter in your user details. **Make sure you use your UTSA email address.**

## Welcome to User Registration

Existing User? [Click here to Login](#)

New User?

Get started with the following details:

First name\*

Last Name\*

Address 1\*

Address 2

5. You should be directed to a download portal upon registering.

6. Check the box on the left and then click “Download Now”

**List Entitlements** Rachel Davis ▾ ?

Entitlements are listed below. Sort by clicking a column heading. Select specific entitlements to view or perform actions on them.

ChemDraw/ChemOffice Users  
COPY YOUR PRODUCT ACTIVATION CODE!

Page 1 of 1

Activation ID ▾ Contains ▾

Advanced Search

<input type="checkbox"/>	Entitlement ID	Product	Quantity_Purchased	Start Date	Expiration	Maintenance	Product_Activation	Downloads
<input checked="" type="checkbox"/>	ORD76571	ChemDraw Professional. LARGE Academic Institutional Subscription, includes Suppo..	1	Sep 24, 2024	Sep 23, 2027		9AD7-69CB-CE47-0286	Download Now

7. Click “Quick Start Guide”. **This is a PDF with installation instructions in case you run into problems.**

**Download Order** Rachel Davis ▾

To activate on a computer that is offline, see:  
[Offline Device Management](#)

**Product Activation Code** [REDACTED]

Product: ChemDraw Professional. LARGE Academic Institutional Subscription, includes Suppo..

← Copy the code you see for safekeeping. **THE CODE DISPLAYED ON YOUR SCREEN MAY APPEAR DIFFERENT.**

New Versions Previous Versions

Version	Download Package	Last Update
R-23.1.2	<a href="#">ChemDraw Professional</a>	Oct 22, 2024
R-23.1.2	<a href="#">Quick Start Guide – Open Me First (ChemDraw Professional)</a>	Oct 22, 2024

8. Download the Quick Start Guide.

**Downloads** Rachel Davis ▾ ?

Quick Start Guide – Open Me First (ChemDraw Professional)-23.1.2

Files

1 File(s)

+	File Description ▾	File Size ▾	File Added ▾	File Name ▾
+	Quick Start Guide – Open Me First	494.11KB	Oct 22, 2024	<a href="#">ChemDraw Institution License_QSG.pdf</a>

9. Press the back button and return to the previous page. Click “ChemDraw Professional”. **Copy the Activation Code highlighted in yellow into a Word document or Notepad. You’ll need it later.**

Download Order Rachel Davis ▾

To activate on a computer that is offline, see:  
[Offline Device Management](#)

**Product Activation Code** XXXX-XXXX-XXXX-XXXX ←Copy this code for safekeeping.

Product: ChemDraw Professional. LARGE Academic Institutional Subscription, Includes Suppo..

[New Versions](#) [Previous Versions](#)

Version	Download Package	Last Update
R-23.1.2	<b>ChemDraw Professional</b>	Oct 22, 2024
R-23.1.2	Quick Start Guide – Open Me First (ChemDraw Professional)	Oct 22, 2024

10. You’ll then be presented with installation options for Windows & Mac. Choose the one that matches the operating system on your device.

Files 7 File(s)

+	File Description	File Size	File Added	File Name
+	PC Windows Installer for ChemDraw Suite v23.1.2	1.27GB	Oct 22, 2024	<a href="#">ChemDraw_Suite_23.1.2.exe</a> ←Windows
+	MacOS Installer for ChemDraw Professional v23.1.2	201.36MB	Oct 23, 2024	<a href="#">cd23.1.2.dmg</a> ←MAC
+	ChemDraw Product Activation User Guide v23.1.2	943.43KB	Oct 22, 2024	<a href="#">ChemDraw Product Activation User Guide.pdf</a>
+	ChemDraw Product User Guide v23.1.1	52.71MB	Apr 24, 2024	<a href="#">ChemDraw 23.1.1 Product User Guides.zip</a>
+	ChemDraw Product User Guide Japanese v23	54.2MB	Oct 22, 2024	<a href="#">ChemDraw Product User Guide Japanese.zip</a>
+	ChemDraw Suite Release Notes v23	550.71KB	Feb 14, 2024	<a href="#">ChemDraw Suite v23.0 Release Notes.pdf</a>
+	ChemDraw Hardware/Software Guide v23	353.68KB	Feb 14, 2024	<a href="#">DT-23.0 Hardware Software Guide.pdf</a>

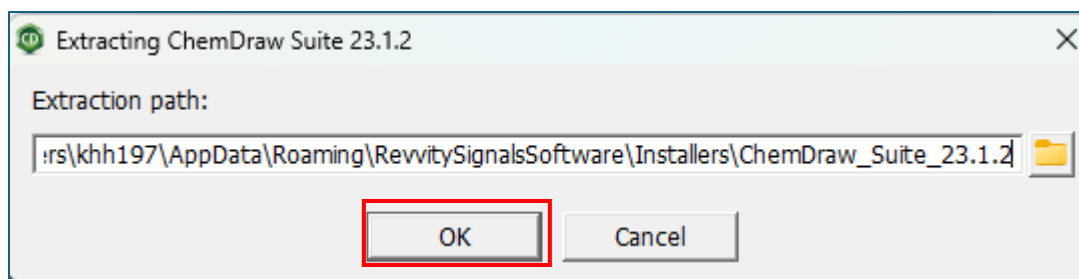
11. The download may take a long time! Double-click once its ready:

M0&authparam=1742428... ☆ 📁 ↓

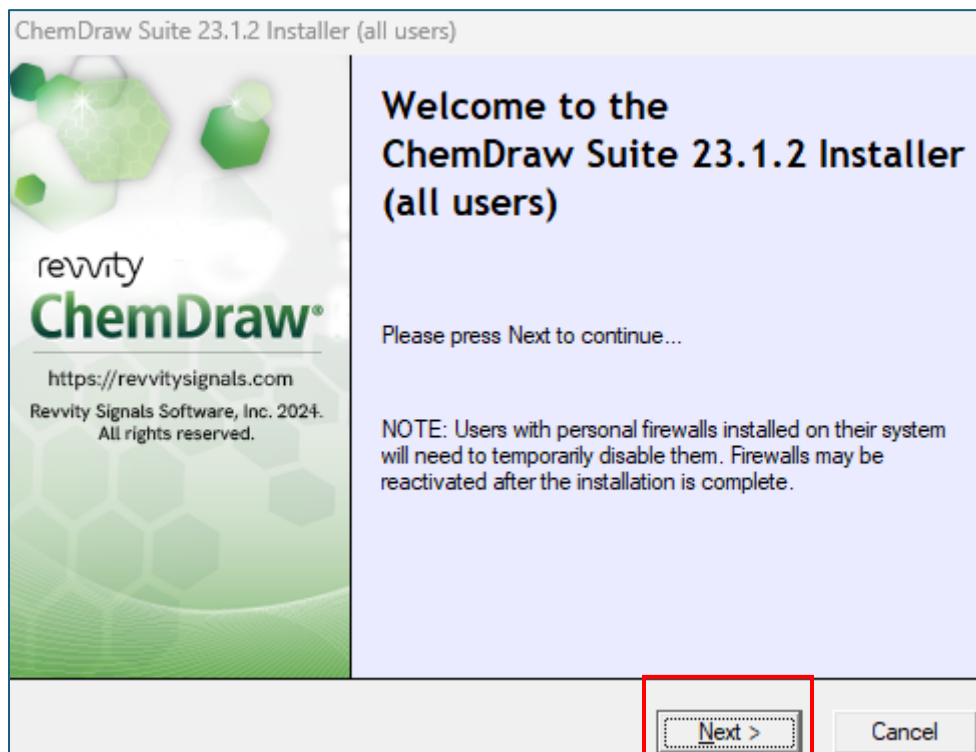
**ChemDraw Institution License\_QSG\_INSTRUCTIONS.pdf**  
494 KB • 7 minutes ago

**ChemDraw\_Suite\_23.1.2.exe**  
1.3 GB • Done

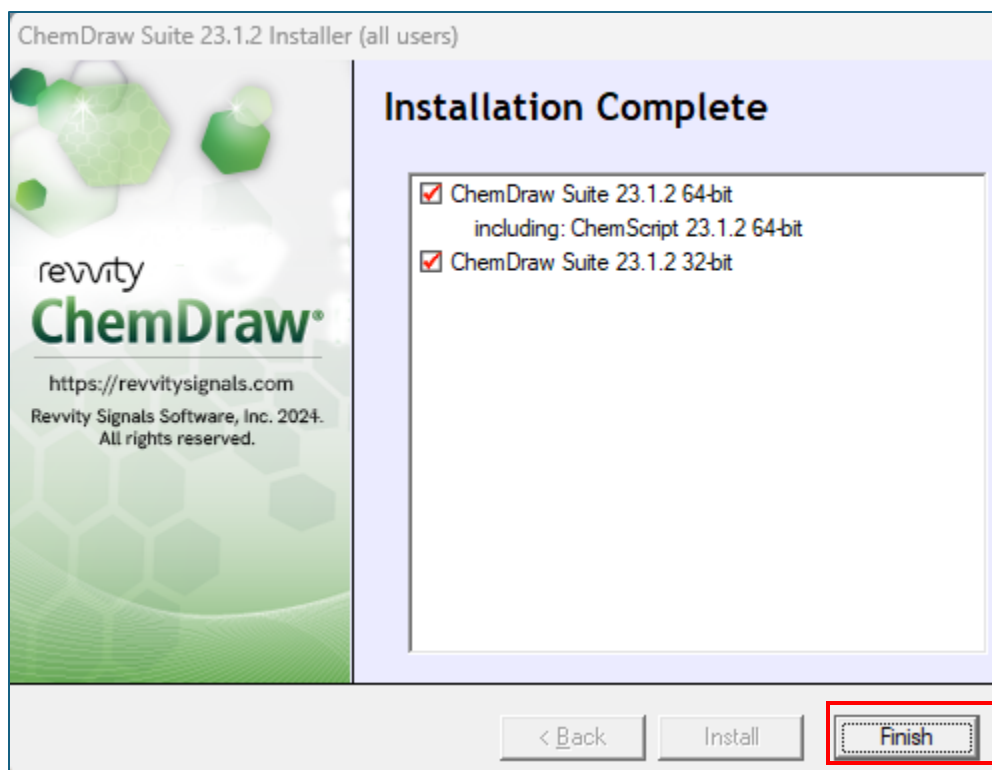
**Connecting\_to\_UTSA\_MyAppsVDI.pdf**  
1,759 KB • 1 hour ago



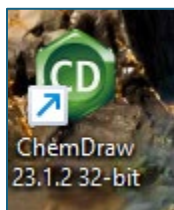
12. Proceed through the installation steps:



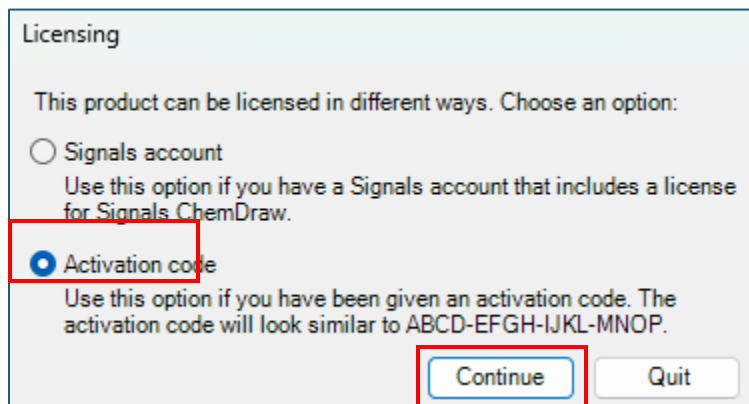
**TIP:** When you see a pop-up for the “License Agreement,” you need to scroll all the way to the bottom of the text box before you can select “I Agree”.



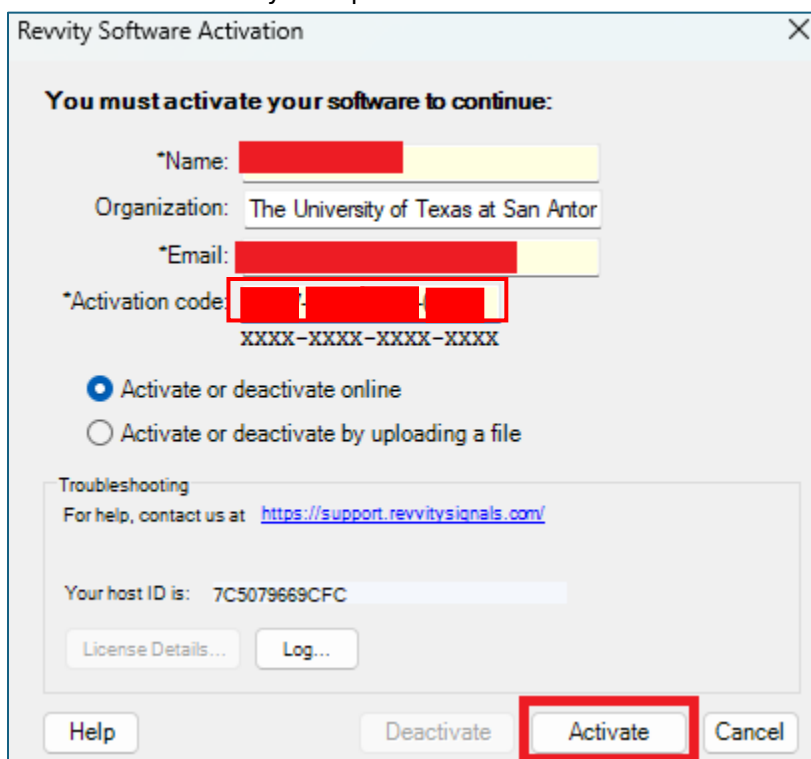
13. Once the installation is complete, the ChemDraw application should appear on your desktop:



14. When you first double-click the application, the below box will appear. Select “Activation Code”.



15. Remember the code you copied earlier? Enter it here.



Revvity Software Activation

**You must activate your software to continue:**

\*Name: [Redacted]

Organization: The University of Texas at San Antor

\*Email: [Redacted]

\*Activation code: [Redacted]

XXXX-XXXX-XXXX-XXXX

☒ Activate or deactivate online

☐ Activate or deactivate by uploading a file

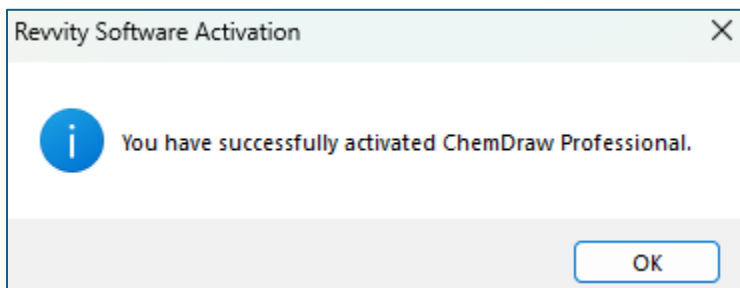
Troubleshooting

For help, contact us at: <https://support.revvitysignals.com/>

Your host ID is: 7C5079669CFC

License Details... Log...

Help Deactivate **Activate** Cancel



Revvity Software Activation

**i** You have successfully activated ChemDraw Professional.

OK

16. Chem Draw should open successfully to this page:

ChemDraw Professional - [Hotkeys Cheat Sheet.cdxm]

File Edit View Object Structure Text Curves Colors Search Add-ins Window Help

Tools

### ChemDraw Hotkey Cheat Sheet - located in Help > Hotkeys Cheat Sheet Menu

Atom	0	1	2	3/a	4	5	6	7	8	9	z	Z	v	u	k	K	j	J
Atom																		

Atom	o/q	O	n/w	N	s	S	p	P	f	F	l/C	L	Enter	+/-
Atom														

Atom	b	B	h	H	y	Q	m	M	c	i	d	A	e	E
Atom														

Atom	g	K	v	2
Atom				

Atom	9	K	v	2
Atom				

Atom	u	7	6	0
Atom				

Atom	b	B	h	H	y	Q	m	M	c	i	d	A	e	E
Atom														

Atom	g	K	v	2
Atom				

Atom	9	K	v	2
Atom				

Atom	u	7	6	0
Atom				

Atom	b	B	h	H	y	Q	m	M	c	i	d	A	e	E
Atom														

Atom	g	K	v	2
Atom				

Atom	9	K	v	2
Atom				

Atom	u	7	6	0
Atom				

Atom	b	B	h	H	y	Q	m	M	c	i	d	A	e	E
Atom														

Atom	g	K	v	2
Atom				

Atom	9	K	v	2
Atom				

Atom	u	7	6	0
Atom				

Atom	b	B	h	H	y	Q	m	M	c	i	d	A	e	E
Atom														

Atom	g	K	v	2
Atom				

Atom	9	K	v	2
Atom				

Atom	u	7	6	0
Atom				

Atom	b	B	h	H	y	Q	m	M	c	i	d	A	e	E
Atom														

Atom	g	K	v	2
Atom				

Atom	9	K	v	2
Atom				

Atom	u	7	6	0
Atom				

Atom	b	B	h	H	y	Q	m	M	c	i	d	A	e	E
Atom														

Atom	g	K	v	2
Atom				

Atom	9	K	v	2
Atom				

Atom	u	7	6	0
Atom				

Atom	b	B	h	H	y	Q	m	M	c	i	d	A	e	E
Atom														

Atom	g	K	v	2
Atom				

Atom	9	K	v	2
Atom				

Atom	u	7	6	0
Atom				

Atom	b	B	h	H	y	Q	m	M	c	i	d	A	e	E
Atom														

Atom	g	K	v	2
Atom				

Atom	9	K	v	2
Atom				

Atom	u	7	6	0
Atom				

Atom	b	B	h	H	y	Q	m	M	c	i	d	A	e	E
Atom														

Atom	g	K	v	2
Atom				

Atom	9	K	v	2
Atom				

Atom	u	7	6	0
Atom				

Atom	b	B	h	H	y	Q	m	M	c	i	d	A	e	E
Atom														

Atom	g	K	v	2
Atom				

Atom	9	K	v	2
Atom				

Atom	u	7	6	0
Atom				

Atom	b	B	h	H	y	Q	m	M	c	i	d	A	e	E
Atom														

Atom	g	K	v	2
Atom				

Atom	9	K	v	2
Atom				

Atom	u	7	6	0
Atom				

Atom	b	B	h	H	y	Q	m	M	c	i	d	A	e	E
Atom														

Atom	g	K	v	2
Atom				

Atom	9	K	v	2
Atom				

Atom	u	7	6	0
Atom				

Atom	b	B	h	H	y	Q	m	M	c	i	d	A	e	E
Atom														

Atom	g	K	v	2
Atom				

Atom	9	K	v	2
Atom				

Atom	u	7	6	0
Atom				

Atom	b	B	h	H	y	Q	m	M	c	i	d	A	e	E
Atom														

Atom	g	K	v	2
Atom				

Atom	9	K	v	2
Atom				

Atom	u	7	6	0
Atom				

Atom	b	B	h	H	y	Q	m	M	c	i	d	A	e	E
Atom														

Atom	g	K	v	2
Atom				

Atom	9	K	v	2
Atom				

Atom	u	7	6	0
Atom				

Atom	b	B	h	H	y	Q	m	M	c	i	d	A	e	E
Atom														

Atom	g	K	v	2
Atom				

Atom	9	K	v	2
Atom				

Atom	u	7	6	0
Atom				

Atom	b	B	h	H	y	Q	m	M	c	i	d	A	e	E
Atom														

Atom	g	K	v	2
Atom				

Atom	9	K	v	2
Atom				

Atom	u	7	6	0
Atom				

Atom	b	B	h	H	y	Q	m	M	c	i	d	A	e	E
Atom														

Atom	g	K	v	2
Atom				

Atom	9	K	v	2
Atom				

Atom	u	7	6	0
Atom				

Atom	b	B	h	H	y	Q	m	M	c	i	d	A	e	E
Atom														

Atom	g	K	v	2
Atom				

Atom	9	K	v	2
Atom				

Atom	u	7	6	0
Atom				

Atom	b	B	h	H	y	Q	m	M	c	i	d	A	e	E
Atom														